

Tpta.

Flor Pálida

trans y copia
florentino sala
C-829-749-7885

BASS

16 16 15

2 3/4

2

2 3/4

2

16 ALAI Y

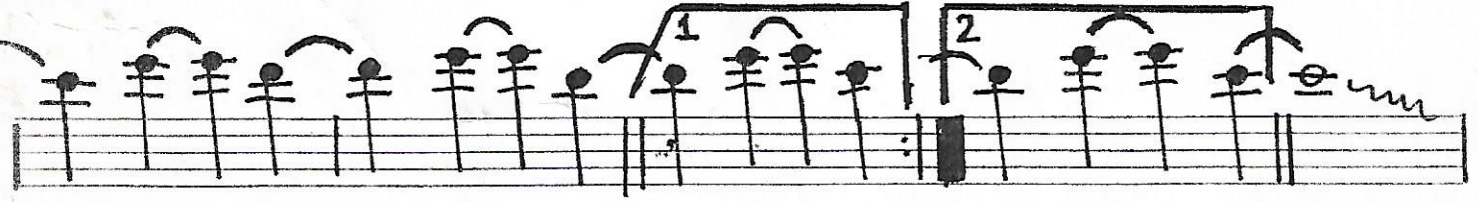
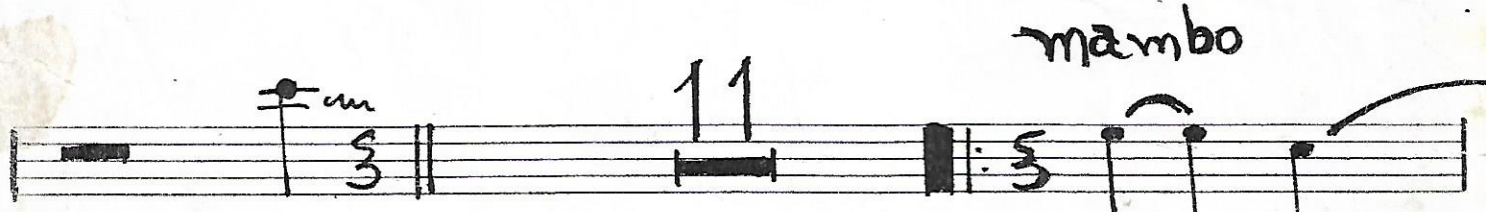
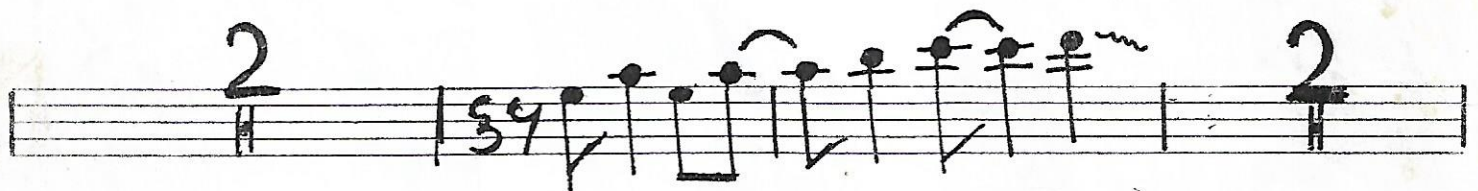
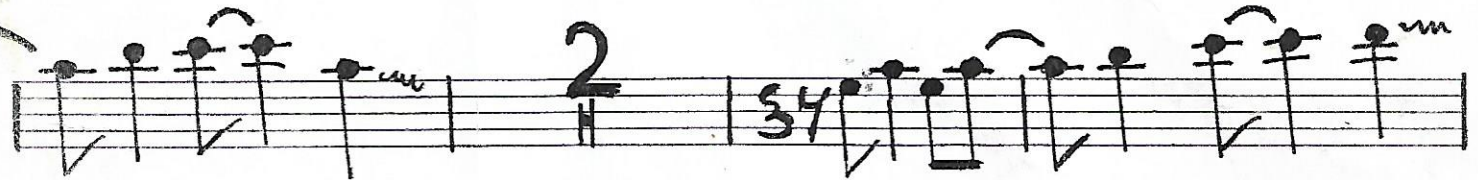
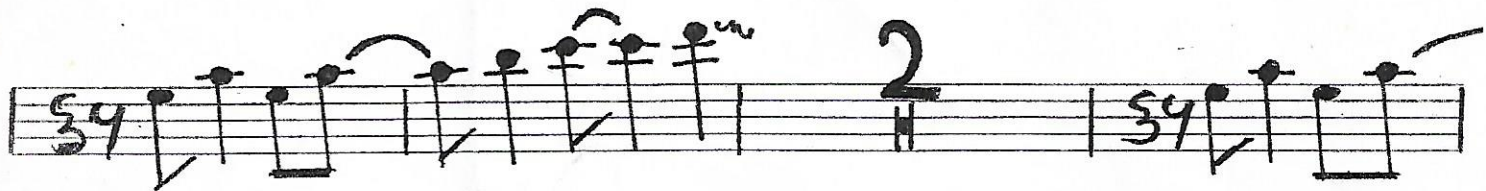
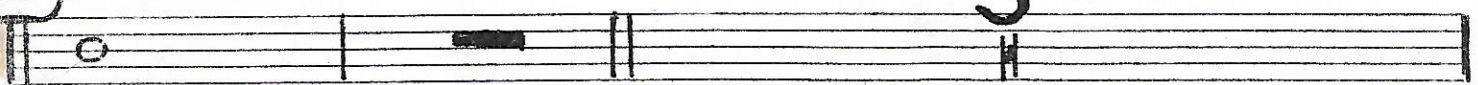
tpta pag # 2

flor pálida

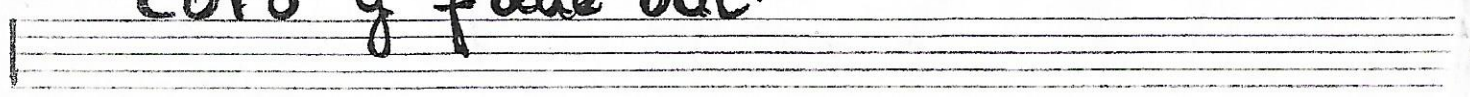
on cue



3



coro y fade out.



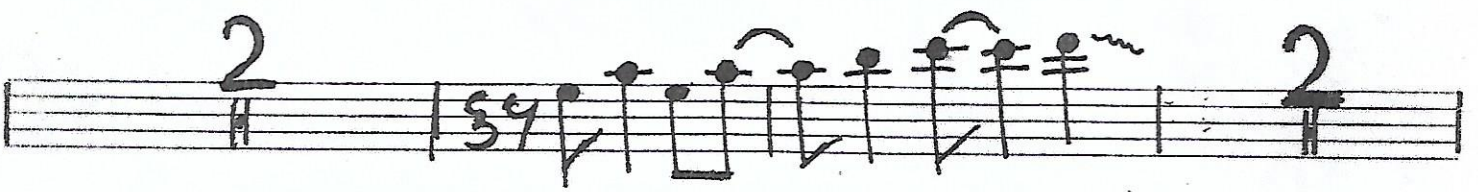
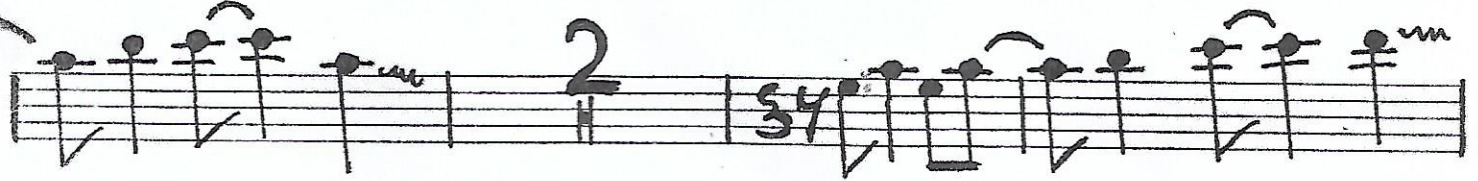
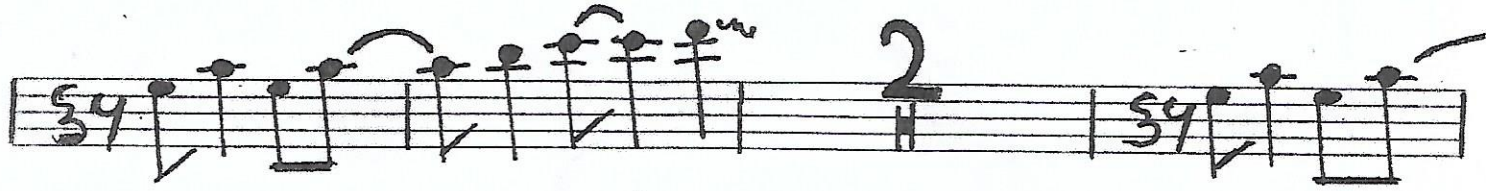
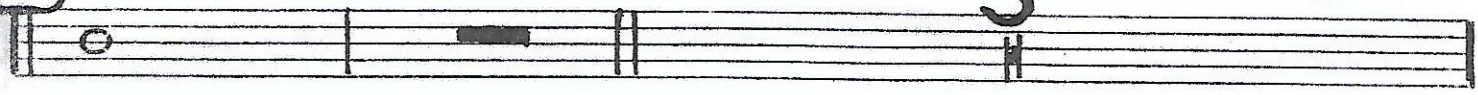
tuba pag # 2

flor pálida

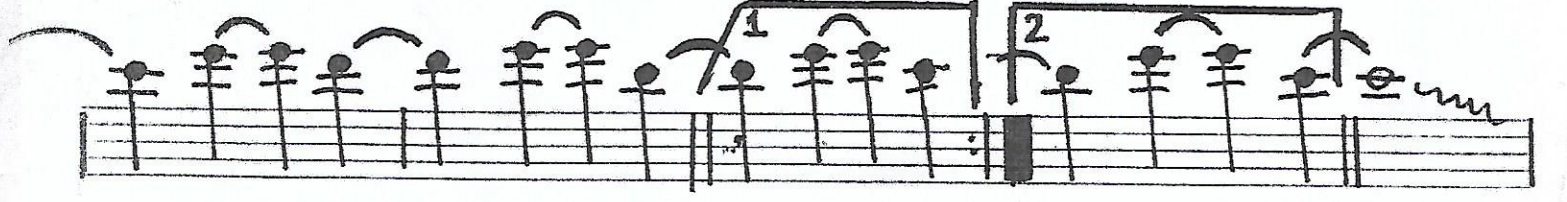
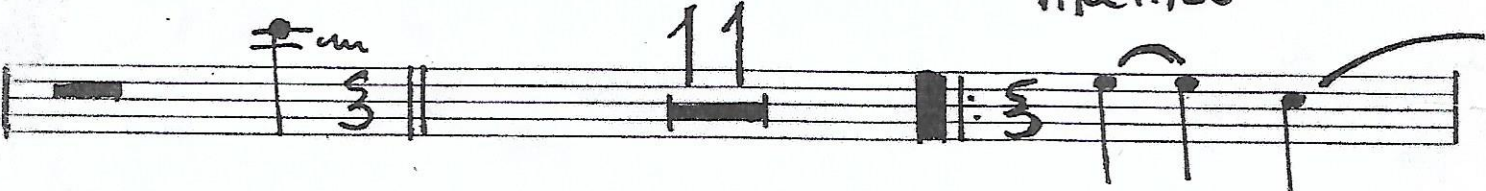
on cue



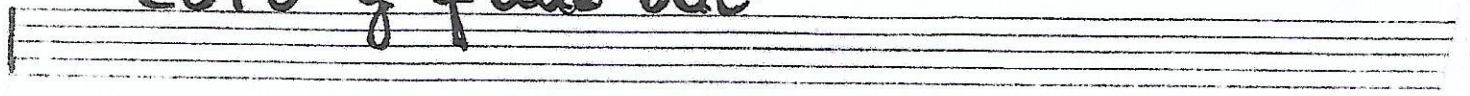
3



mambo



coro y fade out.



sax. alto

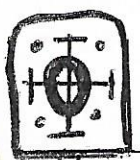
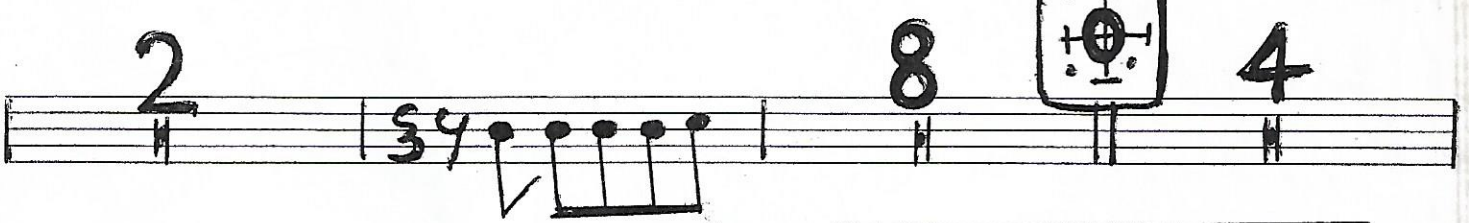
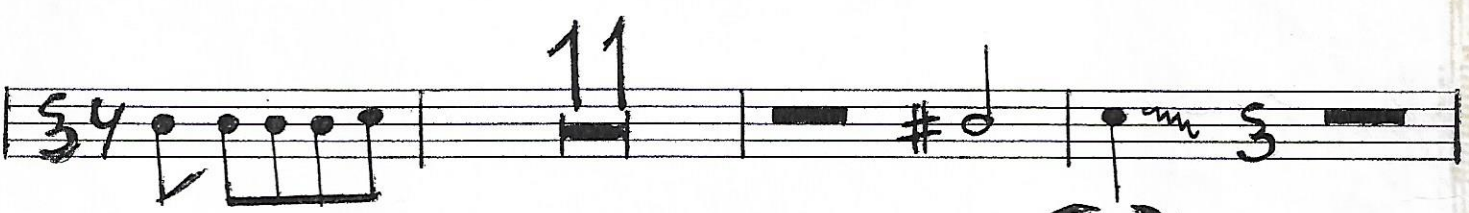
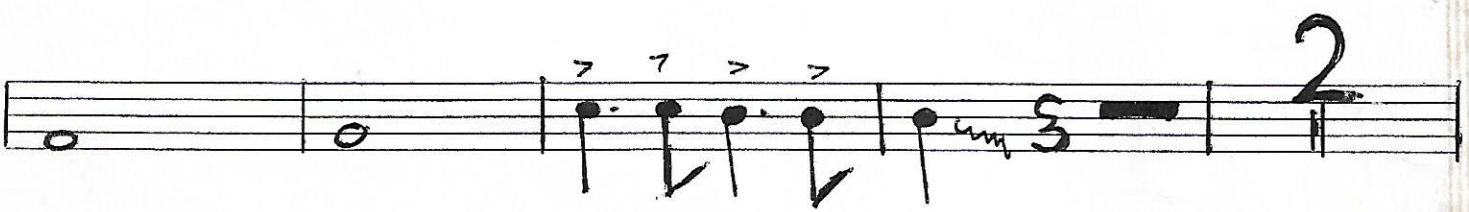
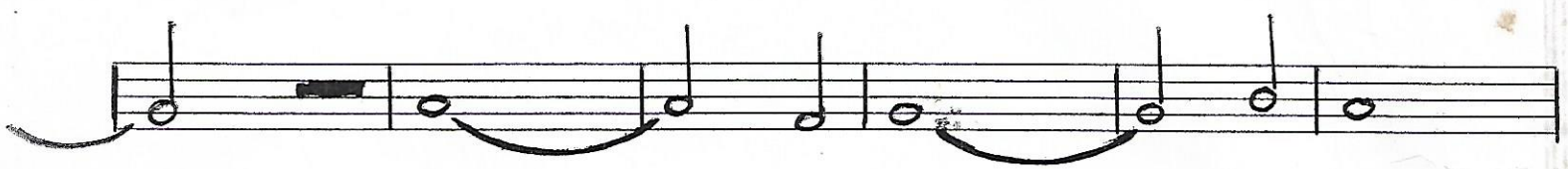
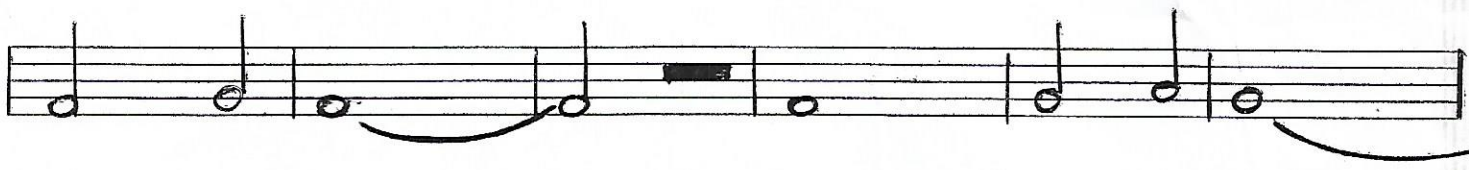
Flor Palida

Bass. lead

16 (A)

VOZ

16

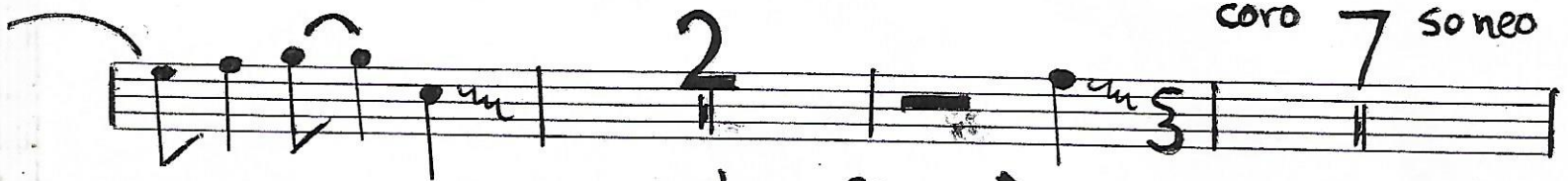
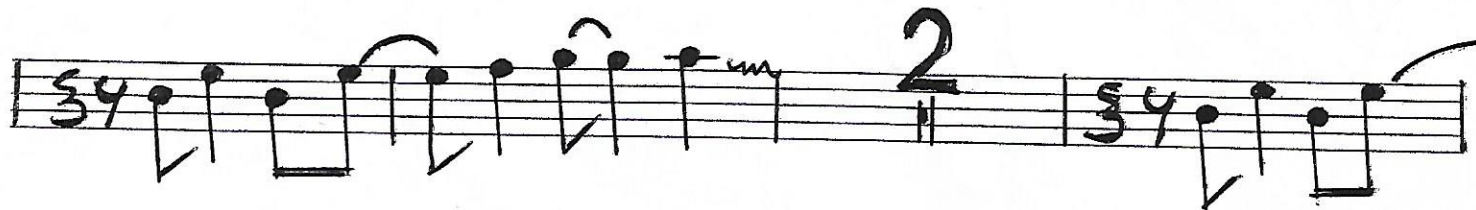
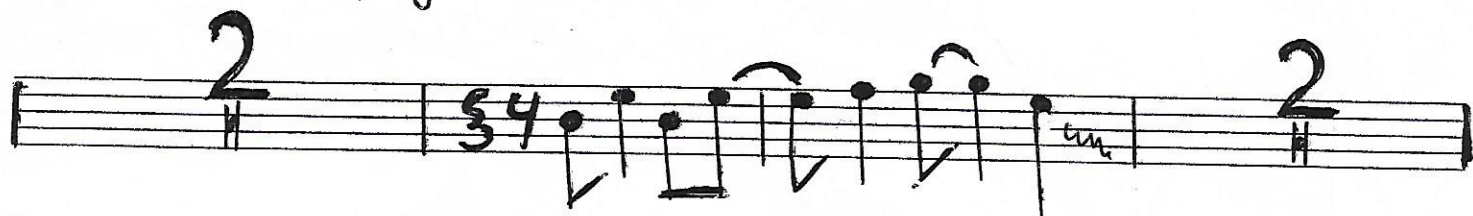


on cue
3



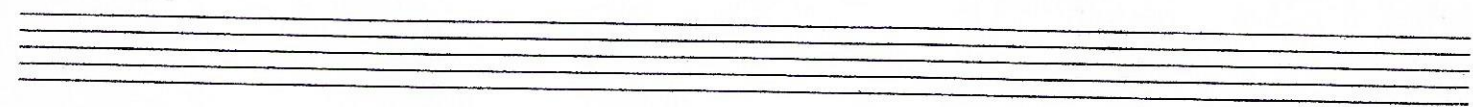
sax.alto pag#2

flor pálida



coro 7 soneo

mambo (x-7)



sax-tenor Flor Pálida

Bass lead

16 A VOZ 16

on cue

sax. tenor pag #2 flor pálida

2

mambo (x-7)

fade out